

Water Weights USB Data Logger Setup & Operating Instructions

Important note

Setup changes and programming is only allowed to be performed by authorized people. If in doubt, please contact your local Water Weights agent. For starting or reading a log, the Easylog USB® software should always be used. The Easylog USB® software should be supplied with the loggers, or can easily be downloaded from our website.

Software Installation & Preparation

The Water Weights USB loggers can not operate without being programmed with the Easylog USB® software.

This software is supplied with the loggers, or else can be downloaded from www.waterweights.nl

For installation of the software please follow these steps:

1. Unzip the file *WW-EL-USB.zip* and save the content to a certain place on your harddrive.
2. Run the file *Setup.exe* and follow the steps until the complete installation has been finished.

3. Once installed insert the USB logger into your USB drive.
4. Install the driver (if required) using the files which you just extracted from the zip file.

At this point all preparations are done and you are ready to setup your log on the USB logger. Please use this manual for all further logger programmings

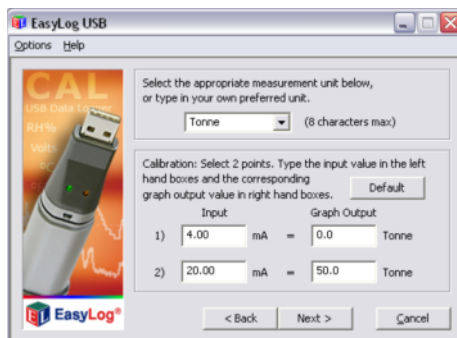
Note: *if in any doubt, please do not hesitate to contact your Water Weights Agent.*

Setting up the Logger / Starting a log

The logger should always be started using the correct software (please see paragraph above). To start a log you must set up the logger following these steps:

1. Insert the USB logger (if required instal drivers, according to the previous paragraph)
2. Open the Easylog USB® software, the main screen will pop up, as shown on the right.
3. Press the big green button to start the setup progress.
4. In the first setup screen (see picture on the right) you will see the name of your logger. This will usually be the same as the Serial number on the case.
5. Now enter the required sample rate (the amount between brackets () is the maximum logging time in the chosen sample rate.
6. Now choose whether you want your readout in 0-100% scale or in custom set units. Using standard calibration the unit will record 0% at 4mA and it will record 100% at 20mA. (*)
7. In case of "Custom Calibration" go to step 8.
In case of "Standard Calibration" go to step 9.
8. On this setup screen (see picture on the right) you will be able to choose or enter the required measurement unit. Once finished click NEXT.

IMPORTANT: This system is set up as 4-20 mA. The right in'and output values can be read in the calibration report.



9. Now you can choose whether you like the Graph to show an alarm line or not. In the graph, it will be shown as a dashed horizontal line.



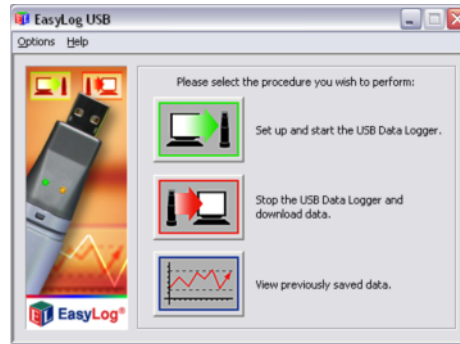
10. In the last screen of the Logger setup you can select when your log should start. If you leave the default, the logging starts immediately after clicking FINISH.



Stopping a log / Download data

To stop a log or to download your data, please follow these steps:

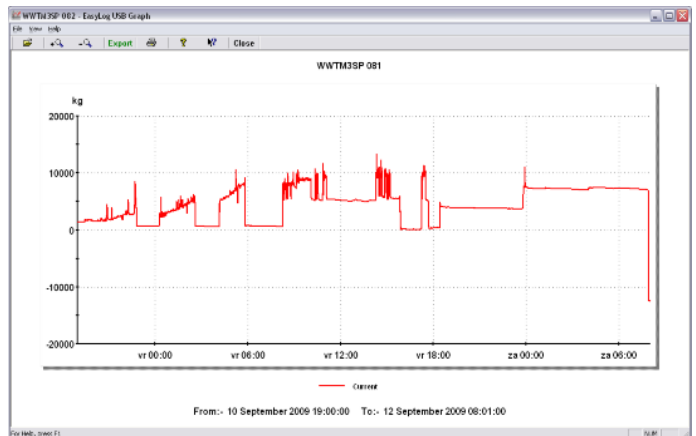
1. Insert the USB logger (if required install drivers, according to the previous paragraph)
2. Open the Easylog USB® software, the main screen will pop up, as shown on the right.
3. Press the big red button to stop the logger & to download your data.
4. Press OK and then save your data to a certain place on your harddrive as a .txt file.
5. Once done EasyGraph® will open the file automatically. (see picture below) Here you can view, zoom or print the data you need. The data can also be exported to Excel using the EXPORT button on top.



Review previous downloaded data

You can review your previous downloaded data by using the third big button on the main screen of the Easylog USB® software.

In case of any question, please do not hesitate to contact your agent to clarify.



Water Weights Europe by
Leeghwaterstraat 23A,
3364 AE Sliedrecht
The Netherlands
Tel: +31 (0)184 430 190
Fax: +31 (0)184 421 900

Email: info@waterweights.nl
Web: www.waterweights.nl
Web: www.waterweights.com